

Bringing Four Wheel Drivers
Together



Victorian Four Wheel Drive
Club Inc.

Free Wheeling



VFWDC

FEBRUARY 2015

Notice Board

VFWDC GENERAL MEETING VENUE

The club meets at the Bowling Club Rooms, Noble Park Football Club, 46-56 Moodemere St, Noble Park on the 1st Wednesday of every month at 8.00pm **(No meeting in January and November meeting at selected location)**. Members and Guests are welcome to dine at the Bistro before attending the meeting.

First **WEDNESDAY** of each month 8.00pm Start

Venue:

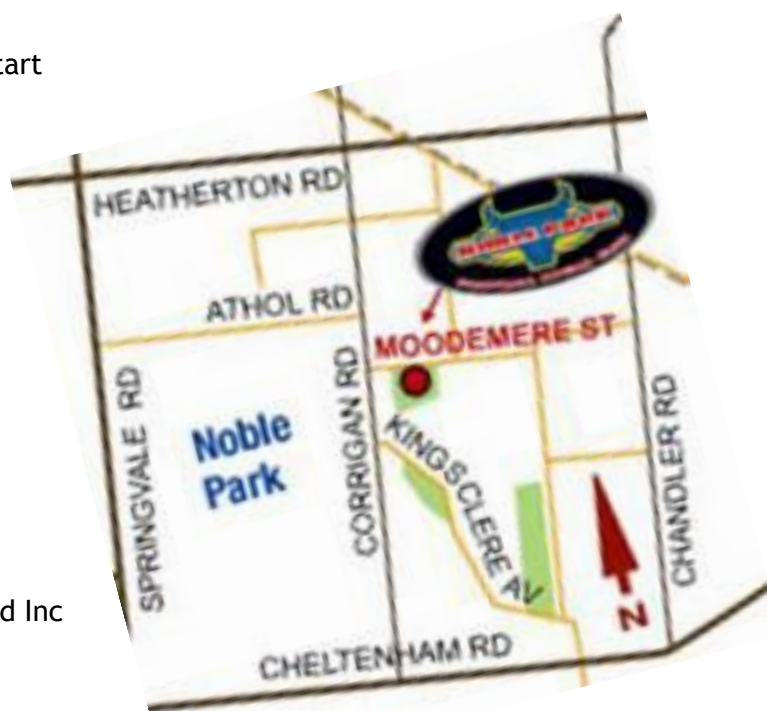
Bowling Club Rooms (Next to Car Park,
down the far end of the car park)

Noble Park Football Club

46-56 Moodemere Street

Noble Park

Melways ref: 89 D4



Aberfeldy Track managed by West Gippsland Inc

www.westgippslandinc.com.au

FREE WHEELING

Hello and welcome to the New Year and February Magazine. I am hoping you all had a wonderful and safe Christmas and I am excited about the up coming trips this year. Please remember to email me your trip report along with any photos by the 20th of each month.

Thanks, Mandie editor@vfwdc.com

COMMITTEE OF MANAGEMENT

2013-2014

President	David Bruinsma	president@vfwdc.com
Vice President		
Treasurer	Steve Pitcher (acting)	treasurer@vfwdc.com
Secretary	Tony Barbera	secretary@vfwdc.com
GENERAL COMMITTEE		
Assistant Secretary	Lisa Barbera	assist@vfwdc.com
Trip Co-Ordinator	Stuart Bowker	trips@vfwdc.com
Newsletter Editor	Mandie Lehmann	editor@vfwdc.com
Associations Delegate	David Bruinsma	delegate@vfwdc.com
General Committee	Mick Harris	-
SUPPORT POSITIONS TO COMMITTEE		
Web manager	Ben Whitworth	web@vfwdc.com
Training officers	Phillip Griffith	
Librarian		
Merchandise	Carolyn Bruinsma	merchandise@vfwdc.com

VFWDC ADVERTISING DIRECTORY



1B, 280 South Gippsland Highway,

Cranbourne, 3977

P: 03 59955055

E: sales@everything4wd.com.au

W: www.everything4wd.com.au

David Jackson



0408 333 313

Anyone wishing to advertise

in the Club Directory,

Please contact the Editor at

editor@vfwdc.com

CLUB MERCHANDISE FOR SALE

Club Polo Shirts	\$28.00 ea	Club Polar Fleece ½ Zip Jumper	\$38.00 ea
Club Polar Fleece Full Zip Jacket	\$48.00 ea	Club Sleeveless Reversible Vest	\$44.00 ea
Club Caps	\$15.00 ea	Club Bucket Hat	\$16.00 ea
Club Wide Brim Hat	\$18.00 ea	Club Beanie	\$12.00 ea
Club Drivers Jacket (Coat)	\$80.00 ea	VFWDC Windscreen stickers (small) \$6.00 (large) \$8.00	

We encourage all members to purchase a Club Polo Shirt.

Email your order to committee@vfwdc.com. Please ensure you advise size required.



CLUB CALENDAR AT A GLANCE

4

2015	4th	General Meeting/ state wide-weight of vehicles and laws	David Bruinsma	0417 747 860
FEBRUARY	6th-8th	Walhalla/Woods Point	Sam	0414503874
	17th	Committee Meeting	David Bruinsma	0417 747 860
	21st	Aberfeldy & Surrounds	Stuart	0428 539 157
MARCH	4th	General meeting	David Bruinsma	0417 747 860
	6th- 9th	Grampians National Park	Sally Higgs	0435 782 207
	6th-9th	Labour Day/long weekend Wombat State Forest	David Bruinsma	0417 747 860
	18th	Committee Meeting	David Bruinsma	0417 747 860
APRIL	1st	General meeting	David Bruinsma	0417 747 860
	3rd-6th	Beachport, Robe	Bruce	0400 425 296
	17th	Committee Meeting	David Bruinsma	0417 747 860
MAY	6th	General meeting	David Bruinsma	0417 747 860
JUNE	3rd	General meeting	David Bruinsma	0417 747 860
JULY	1st	General meeting	David Bruinsma	0417 747 860
AUGUST	5th	General meeting	David Bruinsma	0417 747 860



Treasurer's Report Dec 2014 –Jan 2015

Cheque A/C	Opening Balance as at 01/12/2014	\$1,865.13
Add:		
Raffle Proceeds (December Meeting)	\$54.00	
Membership and Application Fee	\$100.00	
Merchandise Sales	\$24.00	
Transfers in from Term Deposit	\$1,536.58	
Total Monies In:	\$1,714.58	
Closing Balance as at 31/01/2015	\$3,579.71	
Term Deposit	Opening Balance as at 01/12/2014	\$7,475.08
Add: Interest Income Received	\$61.50	
Less: Transfer out to Cheque A/C	-\$1,536.58	
Closing Balance as at 31/01/2015	\$6,000.00	
Petty Cash	(No Change)	\$150.00
Consolidated Closing Cash Position	\$9,729.71	

UPCOMING TRIPS

DESTINATION	Walhalla/Woods Point
LEADER/CONTACT NO.	NAME: Sam Ayoubee MOB: 0414503874
DATE	6 February to 8 February
MEETING PLACE / TIME	Moe McDonalds Friday night 7.30pm
GRADE Please adhere to new trip classifications	WET: Depending on weather. More than likely dry DRY:
TRIP ACTIVITY DETAILS	Leaving Friday night. Spend the night in Stall hut at the bottom of Army track and next day four wheel drive down to Woods Point and spend night at Woods Point. Sunday
VEHICLE LIMITS	MINIMUM: 3 MAXIMUM: 6
APPROX KMS Meeting place to destination	Approx 50km
LAST AVAILABLE FUEL	PETROL: Moe DIESEL: Moe
DISTANCE BETWEEN SUPPLIES	Last stop Moe.
EQUIPMENT REQUIRED	Recovery gear. Prefer vehicles with winches.
MAPS REQUIRED	Leader has map.
RADIO CHANNEL CB / UHF	12

UPCOMING TRIPS

DESTINATION	Aberfeldy and surrounds
LEADER/CONTACT NO.	NAME: Stuart & Maree Bowker MOB: Stuart 0428539157
DATE	Saturday 21 st February 2015. If anyone wants to turn it into a weekend we could be into that as well.
MEETING PLACE / TIME	Yarragon main street outside the bakery 8:00 am for a 8:30 am departure Bakery should be open for Breaky allow extra time
GRADE Please adhere to new trip classifications	WET: Medium DRY: Easy
TRIP ACTIVITY DETAILS	Idea is to head up past Aberfeldy and check the walking tracks our club is looking after, while doing some four wheel driving before heading home. Bring packed lunch and munchies for roadside stops
VEHICLE LIMITS	MINIMUM: Us were going any way! MAXIMUM: N/A
APPROX KMS Meeting place to destination	300-400 klms round trip
LAST AVAILABLE FUEL	PETROL: Moe LPG: Moe
DISTANCE BETWEEN SUPPLIES	400 klms
EQUIPMENT REQUIRED	Own basic recovery gear, tools and any spares you may require. AT or MT tyres
MAPS REQUIRED	Rooftop maps Walhalla-Licola
RADIO CHANNEL CB / UHF	12 UHF

UPCOMING TRIPS

DESTINATION	Grampians National Park and Black Range State Park
LEADER/CONTACT NO.	NAME: Sally Higgs TEL: MOB: 0435 782 207
DATE	Labor Weekend – Friday 6 th – Monday 9 th March
MEETING PLACE / TIME	TBC – We will be leaving on Friday 6 th but can arrange meeting point on Saturday at the Grampians.
GRADE Please adhere to new trip classifications	WET: Medium DRY: Medium
TRIP ACTIVITY DETAILS	This weekend is all about exploring The Grampians as we have not been there before. There will be some 4wding and some hiking (got to get out and look at the views!!) Key areas we will visit will include; Boroka Lookout, Reeds Lookout, Grand Canyon and The Pinnacle, Billimina Shelter Rock Art. We will stay in the nearby Black Range State Park which has a number of camping areas to look at.
VEHICLE LIMITS	MINIMUM: 2 MAXIMUM: 8
APPROX KMS Meeting place to destination	1000km round trip
LAST AVAILABLE FUEL	PETROL: Horsham or Halls Gap DIESEL: Horsham or Halls Gap
DISTANCE BETWEEN SUPPLIES	From camping area approx. 70km
EQUIPMENT REQUIRED	Self Sufficient for 3 days Recovery Gear Firewood – we can collect from a nearby state park and then have a fire where we are camping but we cannot collect where we are camping
MAPS REQUIRED	Grampians SV Maps
RADIO CHANNEL CB / UHF	CH12

UPCOMING TRIPS

DESTINATION	Beach Driving -Beachport, Robe, or Narracoorte Caves or Carpenters Rocks
LEADER	NAME: Bruce Cremonesi
CONTACT NO.	MOB: 0400 425 296 ** if we get numbers I'LL NEED A SECOND TL This is perfect to run your first trip as 99% is done for you **
DATES	Easter 3 rd to 6 th April
MEETING PLACE	Servo on East Link heading south... 7.15am Departure from the servo..
TIME	
TRIP GRADE	MED – HARD - Conditions will vary – BE PREPARED FOR THE WORST.
TRIP ACTIVITY DETAILS	3 rd Day 1 To Beachport Caravan Park Via Mt Gambier Caves + the Blue Lake. 4 th Day 2 to Beach and dunes to Robe, Woakwine Cutting back to Beachport 5 th Day 3 to Rest Day, or Carpenters Rocks or Naracoorte Caves (117klm from Beachport). 6 th Day 4 Head Home. There's also plenty of wineries, and the longest fishing jetty in southern hemisphere. On the 4 th the tides are The first high tide will be at 1:20am and the next at 1:45 pm. The first low tide will be at 7:30 am and the next at 7:40 pm.
VEHICLE LIMITS	MINIMUM: 4 MAXIMUM: 8 - But we can run up to 16 (2 groups of 8 if I get another Leader)
APPROX KMS	From meeting place to Beachport around 550kms
LAST FUEL	PETROL and DIESEL: Beachport, Robe
EQUIPMENT REQUIRED	FULL RECOVERY GEAR – Straps, Rated shackles, dampers etcFRONT AND REAR RATED RECOVERY POINTS ,Sand Flag
MAPS REQUIRED	Available at Beachport Visitors Center Or -> http://robe.com.au/?page_id=59
RADIO CHANNEL CB / UHF	UHF 14
BRING WITH YOU:	-- Tyre pressure gauge, tyre inflator, tyre deflator. -- UHF -- Good warm clothing and probably boots & spare dry clothes - it can be COLD. -- Camping Gear. -- Cameras
ACCOMMODATION:	We will be base camping at Southern Ocean Tourist Park. It's a good park with top facilities the last 7 times we have stayed there. Walking distance to the pub for dinner if you don't wish to cook but you must book ahead Also walking distance of the beach if you wanna try your hand at surf/beach fishing

UPCOMING TRIPS

WANT TO PLAN A TRIP?

Find the 10 tips to planning a trip <http://vfwdc.com/pdf/10.steps.pdf>

Find the trip data form <http://vfwdc.com/pdf/Trip%20Data%20Form.doc>

Personal information form <http://vfwdc.com/pdf/Personal%20Information%20Form.pdf>

Temporary member & visitor form <http://vfwdc.com/pdf/Participant.Form.pdf>

Or email Stu our amazing trip coordinator to help you out trips@vfwdc.com

YOUR PHOTOS WANTED!



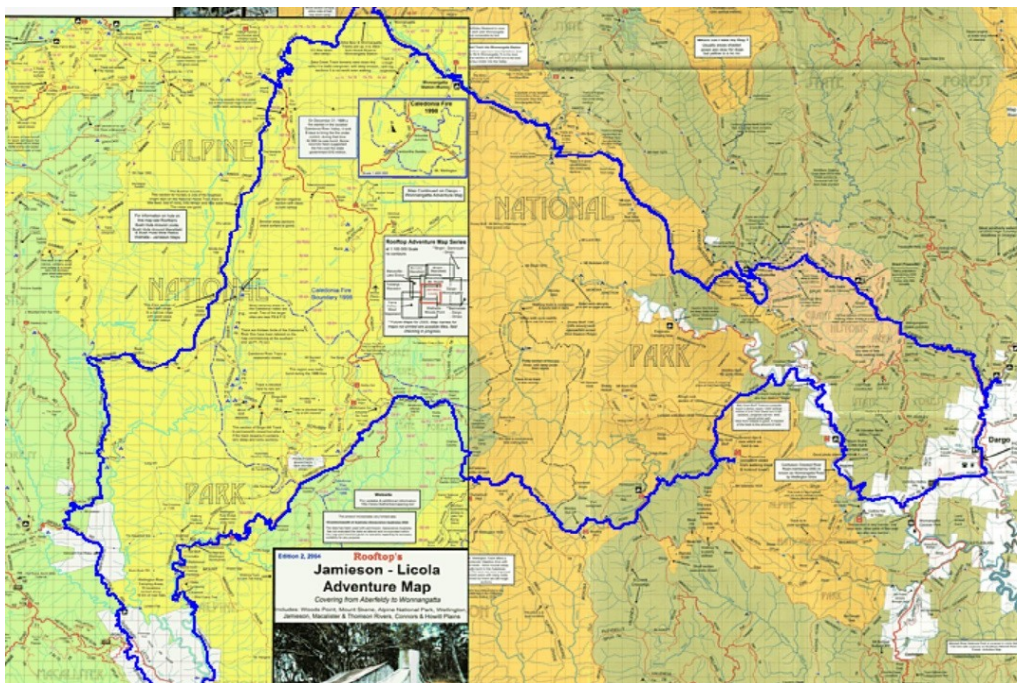
If you have any great trip photos
please email them to Ben web@vfwdc.com to
add to the website gallery.

Make Sure you let Ben know which
trip the photos are from. Please
make sure to blur or black out all li-
cense plates.



Trip Reports

Australia Day weekend 2015 to the Alpine National Park.



Day 1

The group met on a warm humid day at 7.30 am at the Scottish restaurant on the Pakenham bypass. There were two vehicles, Stuart & Maree in the newly acquired 79 series and Brett in the 100 who was eager to test out the new muddies. The trip was un- eventful with a quick cuppa at Licola. First stop was on the Tamboitha Road for the breathalyser and parks inspection for dogs. With no problems we were soon on our way to Moroka Road, and found a nice spot for a bit of lunch, next stop was Horseyard flat hut which a large open area and was unoccupied at the time.



On to the next stop at the Pinnacles. A short steep walk of about 350 metres with many rock steps but a hand-rail was in place to assist. Views were amazing from the fire tower. Back into the chariots and onto billy goat bluff track for the steep descent. The track had been recently graded and whilst smooth in some areas it was a bit loose in others with a lot of rock. It was very popular with many other vehicles having preceded us during the day and with a descent of 1200 vertical metres over just 7 km's it's easy to understand its legendary status. Next destination was Dargo via Crooked River Road. As is the custom of these parts no visit is complete unless the whistle is lubricated at the famous Dargo Hotel.

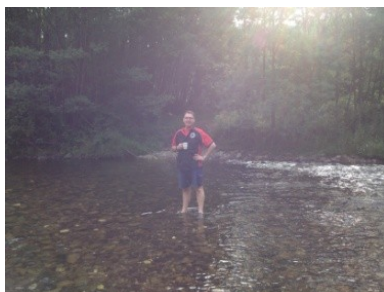


After resting up next stop was Italian Flat campgrounds. We found a small flat spot that was suitable for us. No need for a campfire as it was quite warm with a dip in the Dargo River - surprisingly warm and just what was needed to wash off the days dust.



Day 2

First destination was a visit to the Grant town site. Very little remains today of the township that had a population approaching 2000. Heading along McMillan Road we headed for Talbotville. It was very busy with at least 50 vehicles camping along the rivers edge around the wide open campgrounds. The Crooked River was the chosen exit route until turning onto the Cynthia Spur Track to the Cynthia Range Track to the Wombat Range track for the descent into the Wonnangatta Valley. This is a large open area with a homestead ruins and a cemetery from the settlers (Bryce) family. Exiting to the west via Zeka Spur Track. It was very steep and many rock sections and exited onto the Howitt High Plains and made camp. Fortunately a fire was started and kept the evening chill at bay.





Day3

It ended up being a cold night and at ~ 1400 metres we awoke to an icy start on the swag and awnings. Once thawed we headed for Butcher Country Track. Initially it was flat with bog holes evident and one sticky enough to halt the 79, but after a quick snatch we were on our way again.

What we estimated at 2.5 hours ended up taking 4.5 hours. It was very rocky and overgrown following the fire regrowth and redecorated both vehicles. It was a technically challenging drive with loose rock and the need to rebuild the track in one section to negotiate a rock step on a steep descent. Exiting onto the Macalister River Track we followed the picturesque valley and headed for Bull Plain Road via Black Soil Gully Road.

Lunch was eagerly consumed at Barkly Bridge Campground. We headed for Licola and set the sat nav for home.

The return trip to Pakenham bypass was completed at 5.30 pm and travelled a total of 740 km's. The 3 days were full on with little time for dawdling but has opened up a new area to explore to me. Thanks to trip leader Stuart and Maree.

Keep wheeling,
Brett

Just added a few pictures but they really do not do this country justice. One minute you are on top of the world, cresting the mighty mountains and then as the saying goes what goes up must come down and that's just what these tracks do, like being on a roller coaster. Then just as you feel you have conquered the track it throws you a steep pinch, or a rocky decline. This should be on your to do list.

Maree and Stuart

