

**Bringing Four Wheel Drivers
Together**



**Victorian Four Wheel Drive
Club Inc.**

Free Wheeling

VFWDC

June 2016

Vic High Country - 2015

Official Newsletter of the Victorian Four Wheel Drive Club Inc

Registration No A0002184F

Notice Board

VFWDC GENERAL MEETING VENUE

The club meets at the Bowling Club Rooms, Noble Park Football Club, 46-56 Moodemere St, Noble Park on the 1st Wednesday of every month at 8.00pm (**No meeting in January and November meeting at selected location**). Members and Guests are welcome to dine at the Bistro before attending the meeting from 6:30pm.

First **WEDNESDAY** of each month 8.00pm Start

Venue:

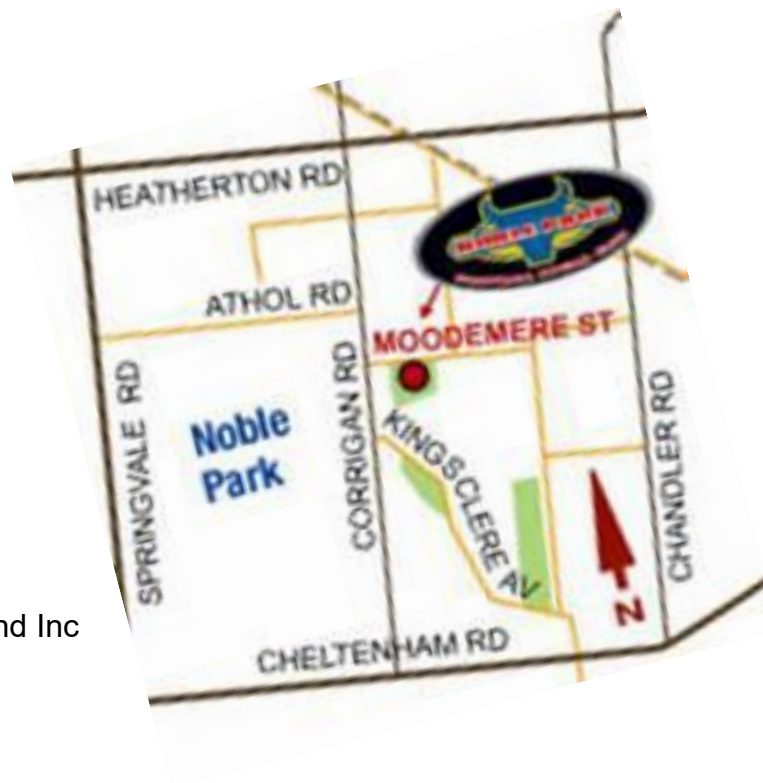
Bowling Club Rooms (Next to Car Park,
down the far end of the car park)

Noble Park Football Club

46-56 Moodemere Street

Noble Park

Melways ref: 89 D4



Aberfeldy Track managed by West Gippsland Inc

www.westgippslandinc.com.au

FREE WHEELING

editor@vfwdc.com

COMMITTEE OF MANAGEMENT		
2015-2016		
President	David Bruinsma	president@vfwdc.com
Vice President	Sally Higgs	vicepres@vfwdc.com
Secretary	Bruce Cremonesi	secretary@vfwdc.com
Treasurer	Tony Barbera	treasurer@vfwdc.com
GENERAL COMMITTEE		
Trip Co-Ordinator	Stuart Bowker	trips@vfwdc.com
Newsletter Editor	(position vacant)	editor@vfwdc.com
Association Delegate's	President and Treasurer	
General Committee	Max Germasi	
General Committee	(position vacant)	
SUPPORT POSITIONS TO COMMITTEE		
Web manager	Ben Whitworth	web@vfwdc.com
Training officer	Phillip Griffith	Email c/- trips@vfwdc.com
Training officer	Ashley Martin	Email c/- trips@vfwdc.com
Merchandise	Carolyn Bruinsma	merchandise@vfwdc.com
Club Details		
Registered Name	Victorian Four Wheel Drive Club	
Registration No	A002184F	
Correspondence	PO Box 778 Dandenong VIC 3174	
Email	secretary@vfwdc.com	
Website	www.vfwdc.com	
The Victorian Four Wheel Drive Club is an affiliated club of Four Wheel Drive Victoria - www.fwdvictoria.org.au		

CLUB MERCHANDISE FOR SALE			
Club Polo Shirts	\$28.00 ea	Club Hoodie	\$48.00 ea
Club Polar Fleece Full Zip Jacket	\$48.00 ea	Club Sleeveless Reversible Vest	\$54.00 ea
Club Caps	\$15.00 ea	Club Bucket Hat	\$16.00 ea
Club Wide Brim Hat	\$18.00 ea	Club Beanie	\$12.00 ea
Club Drivers Jacket (Coat)	\$80.00 ea	VFWDC Windscreen stickers (small) \$6.00 (large) \$8.00 ea	
We encourage all members to purchase a Club Polo Shirt.			
Email your order to merchandise@vfwdc.com . Please ensure you advise size required.			



News From The President

Hello and welcome for yet another issue of the VFWDC monthly magazine.

This month we look forward to a guest speaker from the Victorian High Country huts Association, Mr Ken Birch will be coming to our meeting with a presentation for us. It has been a few years since we last had someone from the Huts Association at one of our meetings, so I am certainly looking forward to this presentation.

<http://hutsvictoria.org.au/>

I keep thinking that as we are coming into the cooler and wetter part of the year that our trip calendar will start to look a bit thin in places, but I am very pleased to see that more trips are being added regularly. The much anticipated Mt Skene Snow trips have made their way into the magazine this month, just in time for you to get your winter gear out of moth balls and packed into your 4wd's. We have plenty of stock available for winter gear on our merchandise rack, so have a good look at the big jackets and hoodies and reversible vests that we have available for you to choose from.

Our Christmas in July this year will be back at St Annes Winery, and I have had recent phone calls from the winery and they are certainly looking forward to our return and they are trying to organise something special for us for the Saturday but I'll talk about that at the club meeting on Wednesday 1st June, and then send emails out to members outlining the event.

The time has come to renew your membership, so please jump onto the web site, download the renewal form and bring along to the club meeting along with cash/cheque or EFT payment receipt and hand to our treasurer, or you could do everything electronically and then email the form and a EFT receipt directly to the Treasurer.

If anyone is reading this magazine on line, and is not yet a member of a club, please feel free to come along to our monthly meeting in Noble Park and come and say giddyay to a committee member and introduce yourself, we are a friendly bunch of folks and I'm sure you will be made to feel very welcome as a guest at our meeting.

So whatever your plans are over the coming weeks and months, I hope you get a chance to go out and enjoy our great outdoors.

David Bruinsma
VFWDC Club President
www.vfwdc.com



CLUB CALENDAR AT A GLANCE

5

2016 June				
1st	Wednesday	General Meeting	President	
10th-13th	Frid to Sunday	Portland Buggy Club	Bruce	0400 425 296
15th		Deadline for magazine articles	Editor	
21st	Tuesday	Committee Meeting	President	
2016 July				
2/6/16 to 13/7/16	6 weeks	Canning Stock Route	Stuart	0428 539 157
6th	Wednesday	General Meeting	President	
9th/10th	Sat/Sun	Xmas in July - St. Annes Winery	David	0417 747 860
15th		Deadline for magazine articles	Editor	
15th to 17th	Fri/Sun	Mt Skene Snow Trip	Andrew	0404 191 949
15th to 17th	Fri/Sun	Mt Skene Snow Trip	Sam	0414 503 874
19th	Tuesday	Committee Meeting	President	
2016 August				
3rd	Wednesday	AGM and General Meeting	President	
6th	Saturday	1st Aid Course - Melbourne City	David	0417 747 860
15th		Deadline for magazine articles	Editor	
23rd	Tuesday	Committee Meeting	President	
2016 September				
7th	Wednesday	General Meeting	President	
9th/12th	extended weekend	Border Track	Mick	0424 766 616
15th		Deadline for magazine articles	Editor	
20th	Tuesday	Committee Meeting	President	
2016 October				
5th	Wednesday	General Meeting	President	
15th		Deadline for magazine articles	Editor	
15th/16th	Sat/Sun	Aberfeldy Working Bee	David	0417 747 860
18th	Tuesday	Committee Meeting	President	
2016 November				
9th	Wednesday	General Meeting - Special Event TBA	President	
15th		Deadline for magazine articles	Editor	
22nd	Tuesday	Committee Meeting	President	
2016 December				
7th	Wednesday	General Meeting	President	
10th	Saturday	Xmas Party TBA	Committee	

Minutes of General Meeting April 2016

Meeting started 8pm

Attendees – as per book

Apologies- as per book

Minutes from Previous Meeting

Held over until next month

Incoming Correspondence

Emails from prospective members

Reply from 4wd Vic on email regarding Permits for Mount Skene Magazines.

Outgoing Correspondence

Email to 4wd Vic asking if the permit scheme was going ahead this year.

Replies to prospective members.

Treasurers Report

As per attachment.

Accept– Stuart Bowker

Seconded – Joanne Tonkin

Matters Arising from Minutes

Held over until next meeting

Upcoming Club Trips (*Trip forms down the back of the meeting on the bench*)

14-15th May – Carolyn's, Little O-Tooles Not yet 40th birthday. Info in the magazine.

21-22nd May - Aberfeldy working bee. Track and Sign Maintenance

10-13th June – Portland Buggy Club trip. Forms down the back at the break.

2nd July to 13th August - Canning Stock Route - Stuart

9-10th July - Xmas in July

9-12th Sept - Border Track

General Business

Dave advised that the new merchandise order was received today in time for tonight's meeting. The Stitching has been done on the inside of the reversible jackets.

Dave discussed the first aid course that will be run in August. Date to be confirmed, but trip form is down the back to register your expression of interest.

Updated Communications policy has been emailed to Dave, and he will email out tonight to all members. People can read it and make comments back to the committee over the next month, and discussion will occur at the next General Meeting, after which the committee will vote on the policy adoption for the club.

Mark Kochan re-iterated his complaint that the club will no longer print and mail out the monthly magazines. David committed that the committee will provide a summary of the costs justifying the committees decision to abandon the printing and mailing distribution of magazines, turning it into an 'digital' magazine only.

New members pack handed out to Peter and Jo Tonkin (at end of meeting)

Coffee Break

Guest Speaker

Shane from Opposite Lock gave an outstanding discussion on suspension, even without the aid of the projector.

Shane, who is a former resident from Walhalla, also gave a candid chat about the area from a 'residents' point of view and spoke about some of the 'history' of the fire department there, amongst other things.

Club Trips Been and Gone

Held over until next meeting

Raffle drawn

1st prize – Shane

2nd prize – Max

3rd Prize – Mick

4th Prize – Sam

5th Prize – Tony

6th Prize – Ken B

7th Prize – Amanda

(note: many donated prizes were brought on the night, some of which needed to be held over until future meetings)

Dave thanked everyone for the night.

Meeting Closed

10pm

Bringing Four Wheel Drivers Together

Victorian Four Wheel Drive Club Inc
www.vfwdc.com

Treasurer's Report

April 2016

Cheque A/C Opening Balance as at 01/04/2016 \$3,741.89

Add:

New Membership	\$110.00
Merchandise	\$188.00
Raffle Feb 2016	\$90.00
Total Monies In:	\$388.00

Less:

Catering Chq 482	\$24.30
Stationary Chq 481	\$29.00
Merchandise Deposit Chq 484	\$450.00
Post Office Box Hire	\$181.00
Refund Membership overpayment	-\$400.00
Total Monies Out:	-\$684.30
Closing Balance as at 30/04/2016	\$3445.59
Plus: Un presented Cheque #469	-\$400.00

29/01/2016 Actual Balance When Cheque's Presented \$3,045.59

Term Deposit Opening Balance as at 01/04/2016 \$6,210.41
Closing Balance as at 30/04/2016 \$6,210.41

Petty Cash Opening Balance as at 01/04/2016 \$150.00
Add: Transfer in from Cheque A/C \$24.30
Less: Catering Costs - Meetings -\$24.30
Closing Balance as at 30/04/2016 \$150.00

Consolidated Closing Cash Position \$9,406.00

UPCOMING TRIPS

DESTINATION	Portland Buggy Club @ Portland Victoria
LEADER/CONTACT.	Name: Bruce Email: secretary@vfwdc.com
DATE	June Long Weekend. 10 th to the 13 th Departing Friday June 10 th not too early.
MEETING INFO	BP Servo on Eastlink Outbound 9.30am for 9.45am departure for a leisurely cruise down there.
TRIP GRADING	DRY : Medium WET : Easy
TRIP ACTIVITY DETAILS	<p>Heading to the 1800ha Portland Buggy club to play in the sand. Everything for the sand enthusiast and is a generally great place to relax.</p> <p>BIG hills for sand tobogganing! Bring ya own skim/body board etc. along!</p> <p>You need to apply and pay 2 weeks in advance for a permit - 4 days \$50</p> <p>Form available here at the meeting from Bruce.</p> <p>Awesome place to learn the fine art of sand driving. There are dunnys and showers on site.</p> <p>Nice grassy campsite + bonfire will be spotted from the space station. Fishing was tops in the gutters last time if that floats ya boat.</p> <p>May also be wildlife around the camp as there as last time.</p> <p>If there is interest - Seals tour www.sealsbyseatours.com.au</p>
VEHICLE LIMITS	MINIMUM: 6 MAXIMUM: 40
APPROX KMS	~ 400 klms to Portland. And 10klms past there.
LAST FUEL	Portland has numerous Service Stations.
EQUIPMENT REQUIRED	<p>Full Recovery Gear required. It's up to you to have the correct gear.</p> <p>All vehicles must display a red flag of not less than 20cm x 30cm at the top of a pole not less than 4m from the ground. The pole must not lay horizontal at speed.</p> <p>Rated front + rear recovery points</p> <p>Snatch Strap + Rated shackles</p> <p>Gloves + Shovel</p> <p>Tyre Pressure Gauge + Compressor for reflatting tyres</p> <p>UHF Radio</p> <p>Be Self-sufficient food and sleeping wise. Camper Trailers Welcome.</p> <p>Video or Still Camera highly recommended.</p> <p>Warm Clothing</p> <p>Sense of Adventure and Humour + munchies n stuff for happy hour.</p>
UHF Channel	UHF 28

UPCOMING TRIPS

DESTINATION	Canning Stock Route
LEADER/CONTACT NO.	NAME: Stuart MOB: 0428539157
DATE	2 nd of July to the 13 th of August 2016
MEETING PLACE / TIME	TBA
GRADE Please adhere to new trip classifications	WET: Difficult DRY: Medium
TRIP ACTIVITY DETAILS	Travel via Alice Springs and the Tanami Tk to Billiluna at the Start of the CSR 21 days on the CSR to Wiluna then on to Leonora to start the Great Central Road to Giles and to the Surveyor Generals Corner. Traveling out from the corner Via Uluru and Yulara and (if time permits) start the Simpson Desert crossing to Birdsville and home via Iniminka, Camerons Corner, Tibooburra, Broken Hill and Mildura.
VEHICLE LIMITS	MINIMUM: 2 MAXIMUM: 5
APPROX KMS Meeting place to destination and return	10,000 kms
LAST AVAILABLE FUEL	DIESEL: Billiluna
DISTANCE BETWEEN SUPPLIES	2000k Each vehicle must carry enough fuel to get through to the advised fuel stops with a safety margin in reserve approx 300 lts
EQUIPMENT REQUIRED	Recovery gear, Camping gear and enough food and water for three weeks without supplies.
MAPS REQUIRED	Hema Maps Great Desert tracks Central Sheet and Western Sheet. TL will have Maps.
RADIO CHANNEL UHF	12 and 40 on the CSR

UPCOMING TRIPS

DESTINATION	Xmas in July - St Annes Winery
LEADER/CONTACT NO.	NAME: David MOB: 0417 747 860
DATE	Saturday 9th July to Sunday 10th July 2015 (<i>provisional date</i>)
MEETING PLACE / TIME	At St. Annes Winery from 12 mid-day onwards on the Saturday: 64 Garrards Road, Myrniong VIC 3341
GRADE	easy
TRIP ACTIVITY DETAILS	<p>Twill be an easy relaxing weekend, camping at the winery itself. Come along, set up your camp - go to the cellar door, sample the wonderful variety of Wines and Ports and purchase your supplies for the weekend. The committee intend to supply the Saturday night dinner on our huge BBQ. The Committee will also supply a cooked breakfast on the Saturday morning. Numbers are needed prior to the weekend either by putting you names and passenger number down on the trip data form at a preceding club meeting - or by emailing me on president@vfwdc.com with your details. We need to know if you are coming for DINNER ONLY, or staying for breakfast as well.</p> <p><i>(I need someone from the club who would be interested in arranging the food and/or cooking as Marie will likely be on the trip with Stuart on the Canning Stock Route).</i></p> <p>Happy hour starts on Saturday as soon as you arrive and are set up, please bring plate(s) of goodies to share around for nibbles !!!!!There is NO 4wding intended at all for the weekend (actually no driving at all until the next day as you head home), but for those who would like to get some 4wheeling done, there will be opportunity to do so upon your departure on Sunday to head up through Wombat SF, I can certainly recommend to try the XL track which has some nice bog holes last time I drove through.</p> <p>The winery allowed us to have an awesome bon fire on last year, I expect that will have the same opportunity again this year.</p>
VEHICLE LIMITS	MINIMUM: 5 MAXIMUM: whole club
LAST AVAILABLE FUEL	PETROL: Bachuss Marsh DIESEL: Bachuss Marsh
DISTANCE BETWEEN SUPPLIES	Bachuss Marsh
EQUIPMENT REQUIRED	Normal camping gear - and then relax around the camp fire.
MAPS REQUIRED	Normal GPS is sufficient to get to St. Annes
UHF	UHF 12

UPCOMING TRIPS

DESTINATION	2016 Mt Skene Snow Trip
LEADER/CONTACT NO.	Andre 0404191949
DATE	15 July 2016 Friday to Sunday
MEETING PLACE / TIME	Lilydale Macca's 7:00pm for 7:30pm departure
GRADE	Med (wet or dry) Beginners welcome
TRIP ACTIVITY DETAILS	We will be heading up Friday night and camping at Skipworth Reserve (Mansfield-Woods Point Rd, 7.5km South of Jamieson). If you can't make it up on Friday night, you can meet us at camp on Saturday morning. We will be leaving camp at 9am sharp to head up and over the summit of Mt Skene and (hopefully) spend the day playing in the snow. We will return to camp on Saturday afternoon and head home to Melbourne on Sunday around lunchtime. Camper trailers welcome. Please note: We are required to apply for a permit two weeks prior to the trip, so members wishing to attend must confirm before the end of June.
VEHICLE LIMITS	MINIMUM: 2 MAXIMUM: 10
APPROX KMS Meeting place to destination	400 km (from Lilydale)
LAST AVAILABLE FUEL	PETROL: Mansfield DIESEL: Mansfield
DISTANCE BETWEEN SUPPLIES	
EQUIPMENT REQUIRED	Own recovery gear (Snatch strap and shackles minimum) Food, camping gear if staying overnight
MAPS REQUIRED	
RADIO CHANNEL UHF	12

UPCOMING TRIPS

DESTINATION	2016 Mt Skene Snow Trip
LEADER/CONTACT NO.	NAME: Sam MOB: 0414503874
DATE	Friday 15 th – Sunday 17 th July 2016
MEETING PLACE / TIME	
GRADE	WET: snow conditions
TRIP ACTIVITY DETAILS	Weekend trip to Mt Skene. Leaving Friday morning and returning Sunday. Trip activities meeting point will be announced closer to trip. Will be going to Licola and staying at Mt Skene and staying at Crows Hut.
VEHICLE LIMITS	MINIMUM: MAXIMUM: 5
APPROX KMS Meeting place to destination	
LAST AVAILABLE FUEL	PETROL: Heyfield DIESEL: Heyfield
DISTANCE BETWEEN SUPPLIES	Approx. 50km
EQUIPMENT REQUIRED	Recovery gear & winches and snow chains if you have.
MAPS REQUIRED	Leader will have maps
RADIO CHANNEL CB / UHF	12

UPCOMING TRIPS

DESTINATION	Border track
LEADER/CONTACT NO.	NAME: Mick MOB: 0424766616
DATE	Sep 9 th Sep 12 th
MEETING PLACE / TIME	TBA
GRADE Please adhere to new trip classifications	WET: Med DRY: Easy
TRIP ACTIVITY DETAILS	We will be exploring some of the big desert and the Murray Sunset country and the border track
VEHICLE LIMITS	MINIMUM: 2 MAXIMUM: 8
APPROX KMS Meeting place to destination	
LAST AVAILABLE FUEL	PETROL: Fuel is readily available DIESEL:
DISTANCE BETWEEN SUPPLIES	At most 300km
EQUIPMENT REQUIRED	This trip could be wet or dry the area is like the high country....unpredictable so be prepared!
MAPS REQUIRED	Victoria's desert map
RADIO CHANNEL UHF	12

UPCOMING TRIPS

DESTINATION	Aberfeldy District - Working Bee
LEADER/CONTACT NO.	NAME: David MOB: 0417 747 860
DATE	Saturday 15th October / Sunday 16th October
MEETING PLACE / TIME	tba
GRADE	WET: Medium/Hard DRY: Easy/Medium
TRIP ACTIVITY DETAILS	<p>Trip to Aberfeldy staying at little O'Tools.</p> <p>Saturday as we go into Aberfeldy area, we will look at all signage and clean and repair as necessary, including trimming weeds and grass at the base of all signage. We will prepare a written report for each sign, so we can send to Rudi for record keeping, and also for our own records so we can ascertain if we need to go back for further works than originally anticipated.</p> <p>After the 'working' bee, we will enjoy some basic 4wd'ing until we reach either Little O'tools or O'tools depending on how busy the area is on the weekend.</p> <p>Happy hour from 5 to 6 (everyone to supply a plate of something)</p> <p>Sunday will be a few more tracks, depending on mood, as we head out and aim for home.</p>
VEHICLE LIMITS	MINIMUM: 2 MAXIMUM: 10
APPROX KMS Meeting place to destination	300 to 450 kms, depends on how much exploring we choose to do.
LAST AVAILABLE FUEL	PETROL: Moe DIESEL: Moe
DISTANCE BETWEEN SUPPLIES	Less than 100 kms
EQUIPMENT REQUIRED	Camping gear, Recovery gear, Food, Water, Sense of fun and relaxation. For the Saturday - need gloves, cleaning wipes, chain saws, wipper snippers (with heavy duty cord preferred)
MAPS REQUIRED	
RADIO CHANNEL CB / UHF	UHF 12

We Want Your Old Trip Notes

We are looking for old trip notes from leaders who have lead a trip in the past. This is to give other members some ideas of trips they could run. Please email our trip coordinator

trips@vfwdc.com

**YOUR PHOTOS
WANTED!**



If you have any great trip photos please email them to Ben web@vfwdc.com to add to the website gallery.

Make Sure you let Ben know which trip the photos are from. Please make sure to blur or black out all license plates.



TRIP REPORT

Marysville — Day trip report April 2016

Saturday 16th April 2016

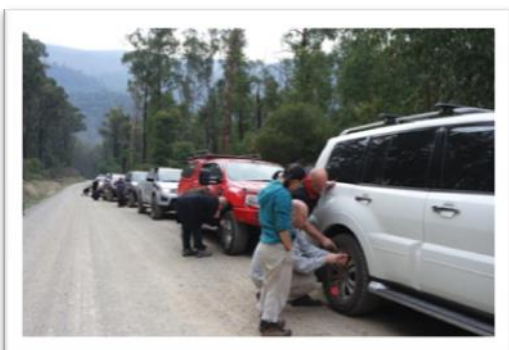
Participants:

Stuart, Maree,	Pajero
Kimberley & Tim	Toyota
Gay & Carol	Pajero (Visitor)
Brett & family	Ranger
Norm & Louisa	Colorado
Pete & Jo	BT50 (Visitor)
Murray & Jo	Patrol
Phil Karen & Claire	

Weather man smiled on us and started at the Marysville bakery.

Everyone keen to have a great day.

Out of Marysville and on to Mt Margaret Road where we aired down. Easy for some, thanks Tim, and others needed reassurance they had it right. This is where going on a trip with others expands knowledge.



Keppel Hut surrounding area.
Autumn colouring the landscape.

On to Keppel hut for morning tea. Wandering round you see how tough things were for our early explorers. The original Keppel Hut was built on this site around 1940 but burned down in 1983, as did its predecessor on Black Saturday 2009. The hut has since been re-built. We had a wonder, the boys comparing 4x4 things.

Just did this by mistake if you put the caps lock on and type 4x4 it comes out as \$X\$ is this trying to tell us something?



Heading up a short rocky pinch got the hearts racing and everyone enjoying the challenge. We had a warning of burning off in the area and expected some tracks to be closed. Its a good idea to check the DELWP web site for updates before venturing out <http://www.delwp.vic.gov.au/fire-and-emergencies/planned-burns-for-the-next-ten-days>.

We saw evidence of the burn passing smouldering bush land. The sky at sunset showed the haze of smoke around.



Down to Whiskey hut, the track is narrow and overgrown with a short creek crossing and 2 huge potholes to negotiate on the way out. Everyone managed Parking on the other side was the biggest challenge.





On to Royston Road and over Mt Bullfight, the rain we had showed a few puddles, and slippery patches but everyone negotiated it with confidence. The rock top of Mt Bullfight had a few worried, with its slippery rock faces to climb, then on to Snob Creek Road and up to Rubicon dam for lunch.

The wasps were friendly. If you want to read more the notes below are taken from;

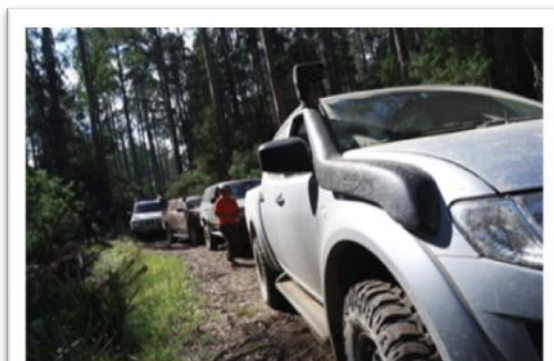
https://en.wikipedia.org/wiki/Rubicon_Hydroelectric_Scheme#Rubicon_Power_Station

In the 1920s the [State Electricity Commission of Victoria](#) investigated [hydroelectric](#) power generation, in parallel with work on [brown coal](#) fired power stations at [Yallourn](#). In 1922 a report was delivered by Messrs J.M. and H.E. Coane relating to the development of potential hydro-electric power on the [Goulburn River](#) and the Cerberean Range; their findings were then in turn submitted to the [Parliament of Victoria](#) for funding, with the more cost effective project^[1] approved in 1922.^[3]

Known as the **Sugarloaf - Rubicon Project**, the initial plan involved five power stations, with total turbine capacity of 25,800 horsepower (19.2 MW); it would be the largest power scheme on the [State Rivers and Water Supply Commission of Victoria](#)'s ongoing construction of Sugarloaf storage reservoir for irrigation. It is now called [Lake Eildon](#). The four other power stations were situated with two on the Rubicon, one on the Royston, and one on Snobs Creek. These plans were later altered, the Snobs Creek station deleted, and an additional station provided at Rubicon Falls, bringing the installed turbine capacity to over 35,000 horsepower (26 MW).^[3] The **Sugarloaf Power Station** generated electricity during the [irrigation](#) season from October to April, when water released from this dam could also be used for power generation. The other four power stations were used during the rainy seasons of winter and spring.^[3]

Work started in 1922, and by 1928 the mountain stream section of the project was complete, the Sugarloaf power station on the Eildon following in 1929.^[4] Rubicon 'A' power station has a pipeline with a 1,455-foot (443 m) drop over its 4,280-foot (1,305 m) length. This station also remotely controlled the other power stations in the project.^[3] Minor enlargements were carried out at one station in 1954–55.^[1] The 13.5-megawatt (18,100 hp) Sugarloaf Power Station on the [Goulburn River](#) was replaced by the larger [Eildon Power Station](#), and dam at the same site in the 1950s, with the turbines upgraded and reused.^[4]

Lunch stop was a logistical challenge getting everyone over the rickety bridge and parking in a line. Its all about wheel placement and trusting the person giving you the instructions.





We had a standard joke in our car about the Montague St Bridge The bridge in Melbourne that people seem happy to hit. We joked about this as the trees were over the track. Finally we got stopped and Stuart got out the chain saw.

It's important to ensure there is personal safety equipment, we all want to get home safe. A pair of leather gloves in the car is a good investment.
Finally moved the trees and off again to the trestle bridge



https://en.wikipedia.org/wiki/Rubicon_Hydroelectric_Scheme#Rubicon_Power_Station

The trestle bridges were replaced after their destruction in the 1939 [Black Friday](#) bushfires, were again replaced as part of the maintenance program in 1960s, and the Royston and Lubra Creek bridges were replaced in 1987 and 1991 respectively. The Beech Creek bridge was destroyed in February 2009 by the Murrindindi Mill fire, one of the [Black Saturday bushfires](#). The Victorian Government agreed to rebuild the bridge in October 2011.



On the road heading out we drove past the Cathedral range national park. Watching it change colour is a true privilege. We stopped for a bite to eat at the Buxton Burger place. Are YOU up for the challenge.



Brett got a Buxton Burger and did a great job at polishing it off. Thanks to everyone who joined us on the day tour to Marysville. A great day enjoyed by everyone.

Thanks Maree

As it is coming close to the time for the Annual General Meeting (in August), the committee has decided to add the basic descriptions of the duties expected from the Executive Committee positions.

Presidents Duties

The Presidents role is a voted Committee position and it is the Presidents responsibility to be fully versed with the Club Rules.

Attendance of general meetings making sure meetings are held in accordance with the requirements as specified in the Constitution

Draw up an agenda for General Meetings and ensure meeting is run in a structured manor

Lead the meeting through the agenda, keeping discussion relevant, decision making clear and encouraging member participation when required

Appoint general committee roles and delegate duties to the committee members

Make sure Committee Meetings are held in accordance with the requirements as specified in the Club Rules.

Draw up an agenda for Committee Meetings and ensure meeting is run in a structured manor

Write monthly Presidents for the newsletter to report relevant information to members

Attend Four Wheel Drive Victoria president meetings when required

Oversee and assist in resolving any members disagreements

Welcoming new members or visitors at general meetings

Immediate Past President

This is an office bearers position and requires the incumbent to attend all General Meetings and occasional other meetings.

The incumbent in this position, as it is not an elected position, does not hold any portfolios.

The incumbent is to be a source of historical advice and information to the newly elected Executive Committee.

The position has full voting rights similar to those of the elected Committee members.

Vice President

The Vice Presidents role is a voted Committee position and it is the Vice Presidents responsibility to be fully versed with the Club Rules.

To convene and run orderly meetings in accordance to the Clubs Constitution in the event of the President is absent

To organise guest speakers for each meeting and be responsible for providing the necessary support, assistance and fellowship to ensure that their presentation is of the highest quality and they leave our meeting with a deep respect for the organisation they have just visited. Furthermore, to introduce those guest speakers to the meeting and move an effective vote of thanks for their presentation.

Assist in all necessary aspects of administration of the Club

Secretary's Duties

Collect the club mail from the club PO Box (778) at Dandenong Plaza Shopping Centre prior to the General Meeting.

Attend the General Meeting at Dandenong Library Meeting Room ensuring that

The Attendance, Apologies and Visitors books are available for members / visitors to sign in

Take the minutes of the General Meeting

Present the incoming and outgoing correspondence at the General Meeting

Type up the minutes noting number of attendees, apologies and visitors

Attend the committee meeting

File correspondence in and minutes of the general meeting

Attend to any outgoing correspondence as determined by the committee

Ensure new member kits are up to date and available as required

Maintain the membership list

Print and Laminate membership cards for current year ensuring that they are signed (MemberCard06-07.doc may be used as a template)

attend to annual duties, Fill out the Committee Details and Membership numbers and hand to the Treasurer to return to the Association with payment

Ensure that you have become signatory for Club Bank Account (coordinate with Treasurer)

Treasurer's Duties

The Treasurer's role is a voted Committee position and it is the Treasurer's responsibility to be fully versed with the Club Rules.

To receive all new member application, and member renewal forms and monies and issue receipts

Deposit all monies received into club bank account (from membership fees, club raffles, sales of merchandise etc.

Keep a record of the accounts—which can be made available by request of any club member

Prepare a monthly financial status report for the General Meetings

Prepare the AGM report with full annual financials, which will also include president and trip coordinators reports.

Trip Coordinator

The Trip coordinators role is a voted Committee position and it is the Trip Coordinators responsibility to be fully versed with the Club Rules.

Ensure attendance to each Club General Meeting fully prepared with relevant information.

If unable to attend it is the Trip Coordinators duty to ensure another committee member has the Trip folder with the up to date information for the Club Meeting

Ensure attendance to all Club Committee Meetings

Be up to date with the Trip Leaders Guidelines as specified by the Adventure Activity Standards and FWDV (copies are in the front of the binder)

Ensure all trip information is correctly recorded in the Trips binder

Ensure the Trip Information Forms are up to date for each meeting.

Ensure copies of other relevant forms are available if or when needed (Track survey reports, Accident Survey Form, Trip Incident form, Personal Information forms, Trip rating information)

Ensure all TDF (Trip Data Forms) are filled in correctly and a copy is passed onto the Newsletter Editor

Liaise with the Newsletter Editor and follow up any trip reports that haven't been submitted

Association Representative Duties

The Assoc. Rep role is a voted Committee position and it is the Assoc. Rep's responsibility to be fully versed with the Club Rules.

To attend all Association meetings with the President, and to report back to committee and also the General meetings with all items pertaining to the Victorian Four Wheel Drive Association.

VICTORIAN FOUR WHEEL DRIVE CLUB INC

Nomination for Election to the Committee of Management – 2016/2017

I.....Signed:.....

Nominate.....for the position of

.....

I.....Signed:.....

Second the nomination for election to the Committee of Management.

I.....Signed:

Of.....

Hereby accept the nomination for election to the Committee of Management
of the Victorian Four Wheel Drive Club Inc for the position of

.....

.....

VICTORIAN FOUR WHEEL DRIVE CLUB INC

Nomination for Election to the Committee of Management – 2016/2017

I.....Signed :

Nominatefor the position of

.....

I.....Signed :

Second the nomination for election to the Committee of Management

I.....Signed :

Of

Hereby accept the nomination for election to the Committee of Management
of the Victorian Four Wheel Drive Club Inc for the position of